

R-471



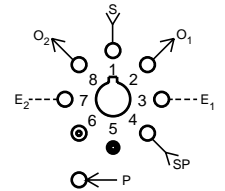
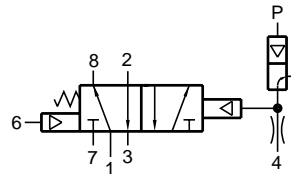
4-Way Amplified Pilot Valve

Features:

- Micro gap construction - snap action and no blow by
- 3200 Fluidamp® bleed type amplifier section assures long life and repeatability
- Standard octoport plug-in design

Performance:

Flow (SCFM @ 100 psig).....	9
Pilot pressure (psig)	
Minimum.....	8" H ₂ O on 1" H ₂ O off
Pilot supply pressure (psig).....	45 to 100
Temperature.....	32° to 180° F
Working pressure.....	0 to 150
Bleed flow (amplifier orifice).....	0.010"



Description:

R-471 is a 4-way, fully ported, spring return, amplified pilot valve. The R-471 is a hybrid combination of the R-401 and model 3200 snap action valve.

R-472



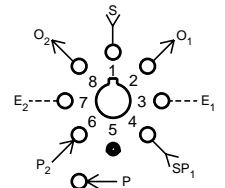
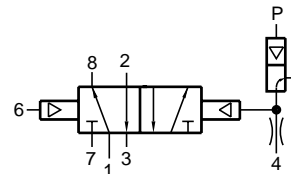
4-Way Interface Valve

Features:

- Micro gap construction - snap action and no blow by
- NFI 3200 Fluidamp® bleed type amplifier section assures long life and repeatability
- Standard octoport plug-in design

Performance:

Flow (SCFM @ 100 psig).....	9
Pilot pressure (psig)	
Minimum.....	8" H ₂ O on 1" H ₂ O off
Pilot supply pressure (psig).....	45 to 100
Temperature.....	32° to 180° F
Working pressure.....	0 to 150
Bleed flow (amplifier orifice).....	0.010"



Description:

R-472 is a 4-way, fully ported, two position, amplified pilot valve. R-472 is a hybrid combination of the R-402 and model 3200 snap action valve.